



Price List 2024



 UK

 Canada

 France

 South Africa

 Cyprus

Contents

Welcome to the world of Bayswater Education. Our premium brands offer quality international education experiences in 5 amazing countries, the UK, Canada, South Africa, Cyprus and France.

UK

| | |
|-------------|----|
| London | 4 |
| Liverpool | 6 |
| Brighton | 8 |
| Bournemouth | 10 |

Canada

| | |
|-----------|----|
| Vancouver | 12 |
| Toronto | 14 |
| Calgary | 16 |

South Africa

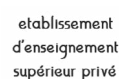
| | |
|-----------|----|
| Cape Town | 18 |
|-----------|----|

France

| | |
|-------|----|
| Paris | 20 |
|-------|----|

Cyprus

| | |
|------------------------------|----|
| English in Cyprus (Limassol) | 22 |
|------------------------------|----|



Our Promise

We're passionate about growing communities of global thinkers and explorers, at home and abroad - whatever their story. We set up Bayswater because we want people from every walk of life to get a buzz from discovering new cultures, exploring new flavours, and learning what's out there. We think of them as global spirits, like ourselves.



A home away from home

We're here to support you, at every step of your journey.

More power to you

We're a student powered community, listening to you and celebrating your efforts and achievements.

Your success is ours

It's our job to meet your needs and give you what you need to succeed. Your goals are ours too.

Inspiring global spirits

Why we do what we do - to empower all young people to create the life they want to live.



London

Course Fees

General English and IELTS Preparation

Prices and lessons are per week

| Course | Lessons | 1 to 11 | 12 to 23 | 24+ |
|-----------------|---------|---------|----------|------|
| Standard | 20 | £345 | £310 | £270 |
| Intensive | 25 | £385 | £345 | £300 |
| Super Intensive | 30 | £430 | £385 | £340 |

IELTS Preparation available in Standard 20 lessons. Can be combined with 5 or 10 General English lessons as part of an Intensive or Super Intensive Course
Minimum level for IELTS preparation: B1

| English Plus Add-ons | Lessons | Price | Notes |
|----------------------|---------|-------|---------------------------|
| One to One lessons | 5 | £400 | Custom packages available |

| Family Options | Lessons | 1+ | Extra adult/child | Course dates |
|--------------------------|---------|------|-------------------|-----------------|
| Young Learner (age 12+) | 20 | £345 | | 08 Jul - 09 Aug |
| Parent & Child (age 12+) | 20 | £650 | £325 | |

Young Learners must be accommodated with a parent/guardian

Cambridge Exam Preparation

Prices are per course

| Course | Lessons | 8 week | 10 week | Dates |
|-----------------|---------|--------|---------|-------------|
| Standard | 20 | £2,760 | £3,450 | See website |
| Intensive | 25 | £3,080 | £3,850 | |
| Super Intensive | 30 | £3,440 | £4,300 | |

First (FCE) - min level B2 (level 6)

Advanced (CAE) - min level C1 (level 8)

Cambridge Preparation Available in Standard 20 lessons. Can be combined with 5 or 10 General English lessons as part of an Intensive or Super Intensive Course

Professional

Prices are per course - Upper Intermediate (B2) English level required

| Professional Certificate Suite | Duration | Price | Start Dates |
|--------------------------------|----------|--------|-------------|
| Digital Marketing | 4 weeks | £1,995 | See website |
| Luxury Brand Management | 4 weeks | £1,895 | |
| International Business | 4 weeks | £1,895 | |

Premium Package*

| Professional and English | 8 weeks | 12 weeks | 24 weeks | 36 weeks |
|--|---------|----------|----------|----------|
| Any UK cities, any mix of professional and English courses** | £3,155 | £4,315 | £7,625 | £10,895 |
| Extra week | £395 | £366 | £320 | £305 |

*Includes registration fee and material fees

**Courses to be studied one course at a time, not simultaneously

**Professional Courses available in London only



▲ 167 Queensway,
London W2 4SB

Quick Facts

All Courses Include

- Online placement test
- Welcome activity
- Organised social programme
- Student handbook
- End of course certificate
- WiFi

Professional Courses

- Minimum age: 18
- Class size: Max 16, Average 10

English Courses

- Minimum age: 16
- Minimum stay: 1 week
- Courses start: Every Monday
- Class size: Max 15, Average 10

English Lessons

- 1 lesson: 45 min
- 20 lessons: 15 hrs/week
- 25 lessons: 18.75 hrs/week
- 30 lessons: 22.5 hrs/week

Course schedule may take place in the morning or afternoon

Centre Closure Dates

- 1 Jan 26 Aug
- 29 Mar 23 Dec 2024 to
- 1 Apr 3 Jan 2025
- 6, 27 May



London

Accommodation, Transfers and Other Fees

Accommodation Prices are per week

| Homestay Age 16+ | Zone | Time | Bed & Breakfast | Half Board |
|------------------------|------|-------------|-----------------|------------|
| Single Shared Bathroom | 4-5 | 45 - 60 min | £230 | £260 |
| Twin* Shared Bathroom | 4-5 | 45 - 60 min | £220 | £250 |
| Single Shared Bathroom | 3 | 30 - 55 min | £245 | £280 |
| Twin* Shared Bathroom | 3 | 30 - 55 min | £235 | £265 |
| Single Shared Bathroom | 2 | 20 - 55 min | £270 | £295 |
| Twin* Shared Bathroom | 2 | 20 - 55 min | £255 | £290 |

| | | | |
|--|--|--|---|
| Summer Supplement 9 Jun - 31 Aug £30 p/w | Christmas Supplement 22 Dec - 28 Dec £50 | Private Bathroom (Only Zone 4/5) En-suite or Exclusive use £45 p/w | Dietary Supplement £25 - 45 p/w |
|--|--|--|---|

*Twin rooms are only available for two people travelling together
 Students in a single room may be housed in the same homestay as other students
 Students under 18 in a homestay must book at least Half Board, a return transfer and provide a guardian consent form
 Extra nights: billed on a pro rata basis

| Residences Age 18+ | Zone | Time | Per week | Dates |
|---|------|-------------|------------|-----------------|
| Chapter Portobello Studio Room En-suite | 2 | 20 min | £395 | Year round |
| Premium Single Room En-suite | 2 | 30 - 45 min | £425 - 550 | Year round |
| Grand Felda House Single Room En-suite | 4 | 40 - 60 min | £365 | 1 Jan - 07 Sept |

Other Charges

| Prices per booking | |
|------------------------------------|-------------|
| Registration Fee | £90 |
| Accommodation Booking Fee | £50 |
| Bank Charges | £12 |
| Exam Fee - IELTS* | |
| Exam fee - FCE* | Coming soon |
| Exam fee - CAE* | |
| Professional Courses Materials Fee | £24 |

| Prices per week | |
|-----------------|----|
| Materials Fee** | £6 |
| Insurance* | £8 |

* Optional Charges
 **Applies to all language courses

All prices are subject to change



E-mail us
 partners@bayswater.ac
 Call us
 +44 (0)20 7221 7259
 Visit us
 167 Queensway, London W2 4SB

Agent Enquiries
 Our Agents are appointed experts in your country and can give you specialist advice on our courses, as well as any visa requirements. Contact us for an Agent in your area.
 For agent sales enquiries please contact us at
 partners@bayswater.ac



▲ Chapter Portobello,
 1 Alderson St, London W10 5JY

Quick Facts

Room Types

- Single 🛏
- Twin 🛏🛏
- Studio 🛏🛏

Board Types

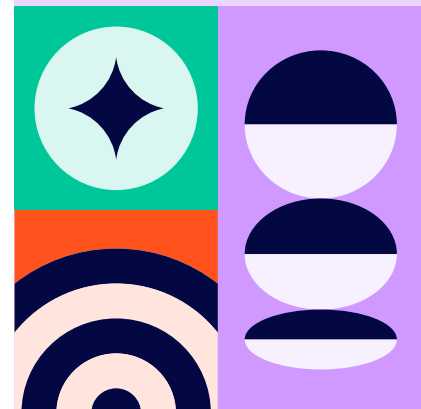
- Bed & breakfast:** Room and breakfast provided
- Half Board:** Room, breakfast and evening meal provided
- Self-catering:** Room provided without meals

Residences are self-catering

Bathroom Types

- En-suite:** Ensuite OR exclusive use of a bathroom
- Shared Bathroom:** Bathroom shared with other residents and/or host family

Arrival and departure day:
 Sunday to Saturday



Liverpool

Course Fees

General English and IELTS Preparation

Prices and lessons are per week

| Course | Lessons | 1 to 11 | 12 to 23 | 24+ |
|-----------------|---------|---------|----------|------|
| Standard | 20 | £265 | £245 | £225 |
| Intensive | 25 | £290 | £265 | £240 |
| Super Intensive | 30 | £330 | £315 | £285 |

IELTS Preparation available in Standard 20 lessons. Can be combined with 5 or 10 General English lessons as part of an Intensive or Super Intensive Course. Minimum level for IELTS Preparation: B1

| English Plus Add-ons | Lessons | Price | Notes |
|----------------------|---------|-------|---------------------------|
| One to One lessons | 5 | £350 | Custom packages available |

Premium Package*

| Professional and English | 8 weeks | 12 weeks | 24 weeks | 36 weeks |
|--|---------|----------|----------|----------|
| Any UK cities, any mix of professional and English courses** | £3,155 | £4,315 | £7,625 | £10,895 |
| Extra week | £395 | £366 | £320 | £305 |

*Includes registration fee and material fees

**Courses to be studied one course at a time, not simultaneously

**Professional Courses available in London only



▲ 42 Whitechapel,
Liverpool L1 6DZ

Quick Facts

All Courses Include

- Online placement test
- Welcome activity
- Organised social programme
- Student handbook
- End of course certificate
- WiFi

Professional Courses

- Minimum age: 18
- Class size: Max 16, Average 10

English Courses

- Minimum age: 16
- Minimum stay: 1 week
- Courses start: Every Monday
- Class size: Max 15, Average 10

English Lessons

- 1 lesson: 45 min
- 20 lessons: 15 hrs/week
- 25 lessons: 18.75 hrs/week
- 30 lessons: 22.5 hrs/week

Course schedule may take place in the morning or afternoon

Centre Closure Dates

- 1 Jan 26 Aug
- 29 Mar 23 Dec 2024 to
- 1 Apr 3 Jan 2025
- 6, 27 May

12
Classrooms

250
Capacity

15
Max class size

IELTS
Available



bayswater.ac/liverpool

E-mail us
partners@bayswater.ac

Call us
+44 (0) 151 707 8905

Visit us
42 Whitechapel, Liverpool L1 6DZ

Agent Enquiries

Our Agents are appointed experts in your country and can give you specialist advice on our courses, as well as any visa requirements. Contact us for an Agent in your area.

For agent sales enquiries please contact us at
partners@bayswater.ac

Liverpool

Accommodation, Transfers and Other Fees

Accommodation Prices are per week

| Homestay Age 16+ | Time | Bed & Breakfast | Half Board |
|------------------------|-------------|-----------------|------------|
| Single Shared Bathroom | 30 - 50 min | £165 | £190 |
| Twin Shared Bathroom* | 30 - 50 min | £155 | £180 |

| | | | |
|--|--|--|--|
| Summer Supplement 9 Jun - 31 Aug £30 p/w | Christmas Supplement 22 Dec - 28 Dec £50 | Private Bathroom En-suite or Exclusive use £45 p/w | Dietary Supplements £25 - 45 p/w |
|--|--|--|--|

*Twin rooms are only available for two people travelling together
 Students in a single room may be housed in the same homestay as other students
 Students under 18 in a homestay must book at least Half Board, a return transfer and provide a guardian consent form
 Extra nights: billed on a pro rata basis

| Residences Age 18+ | Time | Per week | Dates |
|-------------------------------------|--------|----------|------------|
| Atlantic Point Single Room En-suite | 15 min | £155 | Year round |
| Ablett House Single Room En-suite | 10 min | £185 | Year round |
| Benson Yard Single Room En-suite | 11 min | £195 | Year round |

Other Charges

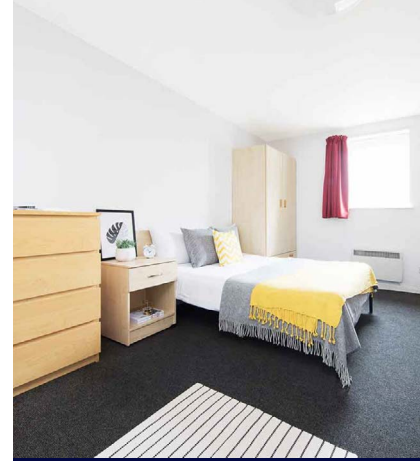
| Prices per booking | |
|---------------------------|-------------|
| Registration Fee | £90 |
| Accommodation Booking Fee | £50 |
| Bank Charges | £12 |
| Exam Fee - IELTS* | Coming soon |
| Prices per week | |
| Materials Fee** | £6 |
| Insurance* | £8 |

* Optional Charges
 **Applies to all language courses

Transfers

| Airport | One Way | Return |
|--------------------|------------|--------|
| Liverpool Airport | £65 | £110 |
| Manchester Airport | £110 | £195 |
| London Airports | On request | |

Transfer prices can include up to 2 people per vehicle - same flight & address



▲ Atlantic Point, Naylor St, Liverpool L3 6LS

Quick Facts

Room Types

- Single
- Twin
- Studio

Board Types

- Bed & breakfast:** Room and breakfast provided
- Half Board:** Room, breakfast and evening meal provided
- Self-catering:** Room provided without meals

Residences are self-catering

Bathroom Types

- En-suite:** Ensuite OR exclusive use of a bathroom
- Shared Bathroom:** Bathroom shared with other residents and/or host family

Arrival and departure day:
 Sunday to Saturday

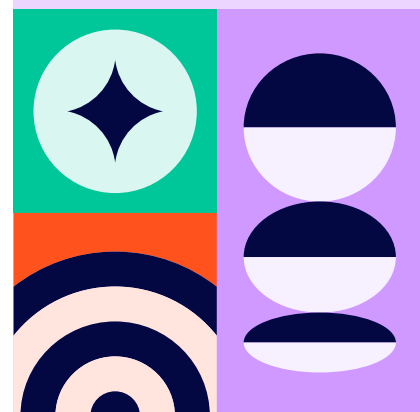
All prices are subject to change



bayswater.ac/liverpool

E-mail us
 partners@bayswater.ac
 Call us
 +44 (0) 151 707 8905
 Visit us
 42 Whitechapel, Liverpool L1 6DZ

Agent Enquiries
 Our Agents are appointed experts in your country and can give you specialist advice on our courses, as well as any visa requirements. Contact us for an Agent in your area.
 For agent sales enquiries please contact us at
 partners@bayswater.ac



Brighton

Course Fees

General English and IELTS Preparation Prices and lessons are per week

| Course | Lessons | 1 to 11 | 12 to 23 | 24+ |
|-----------------|---------|---------|----------|------|
| Standard | 20 | £320 | £280 | £245 |
| Intensive | 25 | £360 | £315 | £285 |
| Super Intensive | 30 | £410 | £365 | £315 |

IELTS Preparation available in Standard 20 lessons. Can be combined with 5 or 10 General English lessons as part of an Intensive or Super Intensive Course. Minimum level for IELTS Preparation: B1

| English Plus Add-ons | Lessons | Price | Notes |
|----------------------|---------|-------|---------------------------|
| One to One lessons | 5 | £400 | Custom packages available |

| Family Options | Lessons | 1+ | Extra adult/child | Course Dates |
|-------------------------|---------|------|-------------------|-----------------|
| Young Learner (age 12+) | 20 | £320 | | 24 Jun - 09 Aug |
| Day Camp (age 12 -17) | 20 | £445 | £295 | |

Individual students aged 12 -15 must be accommodated with a parent/guardian
Parents can study with Bayswater as per Price List, please note timetables will differ

Cambridge Exam Preparation Prices are per course

| Course | Lessons | 4 week | 10 week | Dates |
|-----------------|---------|--------|---------|-------------|
| Standard | 20 | £1,280 | £3,200 | |
| Intensive | 25 | £1,440 | £3,600 | See website |
| Super Intensive | 30 | £1,640 | £4,100 | |

First (FCE) - min level B2 (level 6)
Advanced (CAE) - min level C1 (level 8)
Cambridge Preparation Available in Standard 20 lessons. Can be combined with 5 or 10 General English lessons as part of an Intensive or Super Intensive Course

Premium Package*

| Professional and English | 8 weeks | 12 weeks | 24 weeks | 36 weeks |
|--|---------|----------|----------|----------|
| Any UK cities, any mix of professional and English courses** | £3,155 | £4,315 | £7,625 | £10,895 |
| Extra week | £395 | £366 | £320 | £305 |

*Includes registration fee and material fees
**Courses to be studied one course at a time, not simultaneously
**Professional Courses available in London only



▲ 61 Western Rd, Brighton
Hove BN3 1JD

Quick Facts

All Courses Include

- Online placement test
- Welcome activity
- Organised social programme
- Student handbook
- End of course certificate
- WiFi

Professional Courses

- Minimum age: 18
- Class size: Max 16, Average 10

English Courses

- Minimum age: 16
- Minimum stay: 1 week
- Courses start: Every Monday
- Class size: Max 15, Average 10

English Lessons

- 1 lesson: 45 min
- 20 lessons: 15 hrs/week
- 25 lessons: 18.75 hrs/week
- 30 lessons: 22.5 hrs/week

Family Options

- Parent & Child, Young Learner (Mon - Fri)
- Tuition only
- Day Camp (Mon - Fri)
- Tuition, lunch and half day activities

Course schedule may take place in the morning or afternoon

Centre Closure Dates

- 1 Jan 26 Aug
- 29 Mar 23 Dec 2024 to
- 1 Apr 3 Jan 2025
- 6, 27 May



Brighton

Accommodation, Transfers and Other Fees

Accommodation Prices are per week

| Homestay Age 16+ | | Half Board |
|--|--|--|
| Single Shared Bathroom | | £200 |
| Twin Shared Bathroom* | | £180 |
| Summer Supplement 9 Jun - 31 Aug £30 p/w | Christmas Supplement 22 Dec - 28 Dec £50 | Dietary Supplements £25 - 45 p/w |

*Twin rooms are only available for two people travelling together
 Students in a single room may be housed in the same homestay as other students
 Students under 18 in a homestay must book a return transfer and provide a guardian consent form

| Residences Age 18+ | Time | 1-25 weeks | 26+ weeks | Dates |
|--|------------|------------|-----------|------------|
| Britannia Study Hotel Single En-suite* | 5 - 10 min | £335 | £325 | Year round |

*Prices are valid until 31 October 2023 only

Other Charges

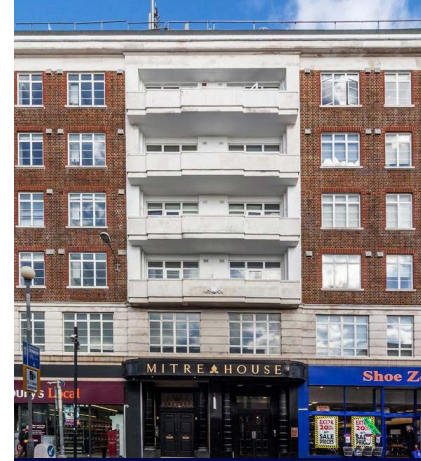
| Prices per booking | |
|---------------------------|-------------|
| Registration Fee | £90 |
| Accommodation Booking Fee | £50 |
| Bank Charges | £12 |
| Exam Fee - IELTS* | |
| Exam fee - FCE* | Coming soon |
| Exam fee - CAE* | |
| Prices per week | |
| Materials Fee** | £6 |
| Insurance* | £8 |

* Optional Charges
 **Applies to all language courses

Transfers

| Airport/Station | One Way |
|-----------------|---------|
| Heathrow | £190 |
| London City | £190 |
| Luton | £235 |
| Gatwick | £130 |
| Stansted | £235 |
| St Pancras | £220 |

Transfer prices can include up to 2 people per vehicle - same flight & address



▲ Britannia Study Hotel, 150 Western Road, Brighton, BN1 2DA

Quick Facts

Room Types

- Single
- Twin
- Studio

Board Types

- Bed & breakfast:** Room and breakfast provided
- Half Board:** Room, breakfast and evening meal provided
- Self-catering:** Room provided without meals

Residences are self-catering

Bathroom Types

- En-suite:** Ensuite OR exclusive use of a bathroom
- Shared Bathroom:** Bathroom shared with other residents and/or host family

Arrival and departure day:
 Sunday to Saturday

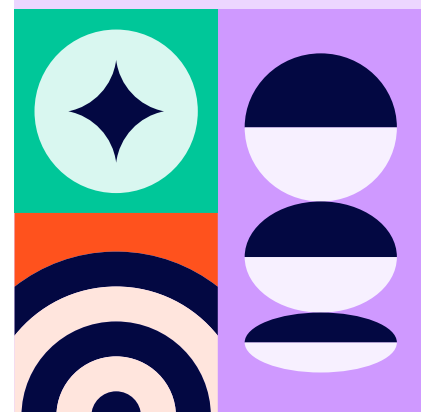
All prices are subject to change



bayswater.ac/brighton

E-mail us
 partners@bayswater.ac
 Call us
 +44 1273 646510
 Visit us
 61 Western Rd, Brighton Hove BN3 1JD

Agent Enquiries
 Our Agents are appointed experts in your country and can give you specialist advice on our courses, as well as any visa requirements. Contact us for an Agent in your area.
 For agent sales enquiries please contact us at partners@bayswater.ac



Bournemouth

Course Fees

General English and IELTS Preparation Prices and lessons are per week

| Course | Lessons | 1 to 11 | 12 to 23 | 24+ |
|-----------------|---------|---------|----------|------|
| Standard | 20 | £265 | £245 | £225 |
| Intensive | 25 | £290 | £265 | £240 |
| Super Intensive | 30 | £330 | £315 | £285 |

IELTS Preparation available in Standard 20 lessons. Can be combined with General English as part of an Intensive or Super Intensive Course
Minimum level for IELTS Preparation: B1

| English Plus Add-ons | Lessons | Price | Notes |
|----------------------|---------|-------|---------------------------|
| One to One lessons | 5 | £350 | Custom packages available |

| Family Options | Lessons | 1+ | Extra adult/child | Course Dates |
|-------------------------|---------|------|-------------------|-----------------|
| Young Learner (age 12+) | 20 | £265 | | 24 Jun - 16 Aug |
| Day Camp (age 12 -17) | 20 | £425 | £255 | |

Young learners must be accommodated with a parent/guardian

Premium Package*

| Professional and English | 8 weeks | 12 weeks | 24 weeks | 36 weeks |
|--|---------|----------|----------|----------|
| Any UK cities, any mix of professional and English courses** | £3,155 | £4,315 | £7,625 | £10,895 |
| Extra week | £395 | £366 | £320 | £305 |

*Includes registration fee and material fees

**Courses to be studied one course at a time, not simultaneously

**Professional Courses available in London only



▲ St Peters Quarter, Bournemouth, BH1 2AD

Quick Facts

All Courses Include

- Online placement test
- Welcome activity
- Organised social programme
- Student handbook
- End of course certificate
- WiFi

Professional Courses

- Minimum age: 18
- Class size: Max 16, Average 10

English Courses

- Minimum age: 16
- Minimum stay: 1 week
- Courses start: Every Monday
- Class size: Max 15, Average 10

English Lessons

- 1 lesson: 45 min
- 20 lessons: 15 hrs/week
- 25 lessons: 19 hrs/week
- 30 lessons: 23 hrs/week

Family Options

- Parent & Child, Young Learner (Mon - Fri)
- Tuition only
- Day Camp (Mon - Fri)
- Tuition, lunch and half day activities

Course schedule may take place in the morning or afternoon

Centre Closure Dates

- 1 Jan 26 Aug
- 29 Mar 23 Dec 2024 to
- 1 Apr 3 Jan 2025
- 6, 27 May



Bournemouth

Accommodation, Transfers and Other Fees

Accommodation Prices are per week

| Homestay Age 16+ | | Bed & Breakfast | Half Board |
|--|--|--|--|
| Single Shared Bathroom | | £140 | £165 |
| Twin Shared Bathroom* | | £130 | £155 |
| Summer Supplement 9 Jun - 31 Aug £30 p/w | Christmas Supplement 22 Dec - 28 Dec £50 | Private bathroom En-suite or exclusive use £45 p/w | Dietary Supplements £25 - 45 p/w |

*Twin rooms are only available for two people travelling together
 Students in a single room may be housed in the same homestay as other students
 Students under 18 in a homestay must book at least Half Board, a return transfer and provide a guardian consent form
 Extra nights: billed on a pro rata basis

| Residences Age 18+ | Time | Per week | Dates |
|----------------------------------|--------------------|----------|------------------|
| Lansdowne Point Single En-suite | 15 min 🚶 - 8 min 🚗 | £235 | 20 Aug to 24 Dec |
| Piccadilly Hotel Single En-suite | 7 min 🚶 - 5 min 🚗 | £250 | 03 Sep - 20 May |
| Piccadilly Hotel Twin* En-suite | 7 min 🚶 - 5 min 🚗 | £160 | |

*Twin rooms are only available for two people travelling together

Other Charges

| Prices per booking | |
|---------------------------|-------------|
| Registration Fee | £90 |
| Accommodation Booking Fee | £50 |
| Bank Charges | £12 |
| Exam Fee - IELTS* | Coming soon |
| Prices per week | |
| Materials Fee** | £6 |
| Insurance* | £8 |

* Optional Charges
 **Applies to all language courses

Transfers

| Airport | One Way |
|-------------|---------|
| Bournemouth | £65 |
| Gatwick | £220 |
| Heathrow | £200 |
| Luton | £265 |
| Stansted | £290 |

Transfer prices can include up to 2 people per vehicle - same flight & address



▲ 51-65 Holdenhurst Rd,
Bournemouth BH8 8GN

Quick Facts

Room Types

Single 🛏
 Twin 🛏🛏

Board Types

Bed & breakfast: Room and breakfast provided
Half Board: Room, breakfast and evening meal provided
Self-catering: Room provided without meals

All residences are self-catered unless otherwise stated

Bathroom Types

En-suite: Bedroom with adjoining private bathroom
Shared Bathroom: Bathroom shared with other residents and/or host family

Arrival and departure day:
Sunday to Saturday

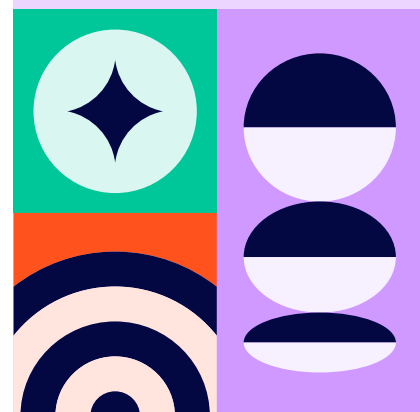
All prices are subject to change



bayswater.ac/bournemouth

E-mail us
 partners@bayswater.ac
 Call us
 +44 (0) 1202 836 731
 Visit us
 St Peters Quarter, Bournemouth BH1 2AD

Agent Enquiries
 Our Agents are appointed experts in your country and can give you specialist advice on our courses, as well as any visa requirements. Contact us for an Agent in your area.
 For agent sales enquiries please contact us at
 partners@bayswater.ac



Vancouver

Course Fees

General English, Business and IELTS Preparation Prices and lessons are per week

| Course | Lessons | 1 to 11 | 12 to 23 | 24+ |
|-----------------|---------|---------|----------|-------|
| Standard | 20 | \$370 | \$350 | \$315 |
| Intensive | 25 | \$420 | \$405 | \$370 |
| Super Intensive | 30 | \$465 | \$450 | \$415 |

IELTS Preparation and Business English: Available in Intensive or Super Intensive
 A combination of 20 or 25 General English lessons + 5 dedicated IELTS/ or Business English lessons
 Minimum level for IELTS Preparation: B1 or students in level 4

| English Plus Add-ons | Lessons | Price | Notes |
|----------------------|---------|-------|---------------------------|
| One to One lessons | 5 | \$500 | Custom packages available |

| University Preparation | Lessons | 12 to 23 | 24+ |
|----------------------------|---------|----------|-------|
| University Pathway Program | 30 | \$450 | \$415 |

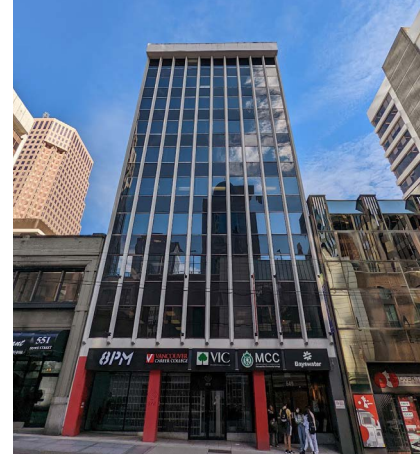
Professional Prices are per course

| Professional Certificate Suite | Duration | Price | Start Dates |
|--------------------------------|----------|---------|-------------------------------|
| International Business | 4 weeks | \$2,250 | 2 Jan, 25 Mar, 17 Jun, 9 Sep |
| Digital Marketing | 4 weeks | \$2,250 | 29 Jan, 22 Apr, 15 Jul, 7 Oct |
| Project Management | 4 weeks | \$2,250 | 26 Feb, 21 May, 12 Aug, 4 Nov |

Premium Package*

| Professional and English | 8 weeks | 12 weeks | 24 weeks | 36 weeks | 48 weeks |
|--|---------|----------|----------|----------|----------|
| Any Canadian cities, any mix of professional and English courses** | \$3,695 | \$5,460 | \$10,455 | \$14,365 | \$18,645 |
| Extra week | \$460 | \$455 | \$435 | \$399 | \$385 |

*Includes registration fee and material fees
 **Courses to be studied one course at a time, not simultaneously
 **Professional Courses available in Vancouver & Toronto only



▲ 549 Howe Street, 6th Floor
 Vancouver BC Canada V6C 2C2

Quick Facts

- All Courses Include**
- Online placement test
 - Welcome activity
 - Organised social programme
 - Student handbook
 - End of course certificate
 - WiFi
 - Bayswater student portal
 - Solo-study online content

Professional Courses

Minimum age: 18
 Class size: Max 16, Average 10

English Courses

Minimum age: 16
 Minimum stay: 1 week
 Courses start: Every Monday
 Class size: Max 15, Average 10

English Lessons

1 lesson: 45 min
 20 lessons: 15 hrs/week
 25 lessons: 18.75 hrs/week
 30 lessons: 22.5 hrs/week

Course Schedule is subject to change and availability

Centre Closure Dates

| | |
|--------|--------------|
| 1 Jan | 2 Sep |
| 19 Feb | 2, 14 Oct |
| 29 Mar | 11 Nov |
| 20 May | 23 to 27 Dec |
| 1 Jul | 1 Jan 2025 |
| 5 Aug | |



Agent Enquiries

Our Agents are appointed experts in your country and can give you specialist advice on our courses, as well as any visa requirements. Contact us for an Agent in your area.

For agent sales enquiries please contact us at
 partners@bayswater.ac

Vancouver

Accommodation, Transfers and Other Fees

Accommodation Prices are per week

| Homestay Age 16+ | Full Board | Half Board |
|-----------------------------|------------|------------|
| Single Room Shared Bathroom | \$315 | \$290 |

| | | |
|---|---|--|
| Summer Supplement 9 Jun - 31 Aug \$40 p/w | Minors Fee Students Under 18 years old \$50 p/w | Dietary Supplements May incur charge |
|---|---|--|

Students in a single room may be housed in the same homestay as other students
 Students under 18 in a homestay must book, a return transfer and provide a custodianship consent form
 Extra nights: billed on a pro rata basis

| GEC VIVA, Pearson, Marine and Burnaby Age 19+ | 5-16 weeks | 17-25 weeks | 26 weeks + |
|---|------------|-------------|------------|
| Shared Bedroom | \$410 | \$327 | \$280 |
| Sectioned Bedroom | \$445 | \$374 | \$327 |
| Private Bedroom | \$510 | \$420 | \$374 |

| GEC King Edward Age 19+ | 5-16 weeks | 17-25 weeks | 26 weeks + |
|------------------------------|------------|-------------|------------|
| Shared Bedroom | \$420 | \$350 | \$304 |
| Ensuite -shared Bedroom | \$445 | \$374 | \$327 |
| Private Bedroom | \$525 | \$444 | \$397 |
| Private Bedroom (Double Bed) | \$535 | \$455 | \$409 |

| | |
|---|---|
| Security Deposit 2 weeks rent | Amenities Fee Non-refundable GEC VIVA, Pearson, Marine and Burnaby \$135 GEC King Edward \$290 |
|---|---|

Minimum stay is 5 weeks. Only available to students 19 years old and older
 Includes bedding, kitchen supplies, utilities, WiFi, in-suite laundry, lounge and gym
 Semester weekly rates apply to bookings longer than 16 weeks
 Students must purchase Bayswater Insurance if living in Bayswater Student residences in Canada

Other Charges

| Prices per booking | |
|------------------------------------|-------|
| Registration Fee | \$185 |
| Accommodation Booking Fee | \$275 |
| Bank Charges | \$35 |
| Exam Fee - Cambridge & IELTS* | \$350 |
| Custodianship Document | \$150 |
| Professional Courses Materials Fee | \$40 |
| Prices per week | |
| Materials Fee** | \$10 |
| Insurance*** | \$25 |

* Optional Charges
 ** Applies to all language courses
 *** Students must purchase Bayswater Insurance if living in Bayswater Student residences in Canada

All prices are subject to change

Transfers

| Airport | One Way |
|-------------------------|---------|
| Vancouver International | \$150 |

Transfer prices can include up to 2 people per vehicle - same flight & address



▲ GEC - Student Residences - Vancouver and Burnaby, BC

Quick Facts

Room Types

- Single 🛏
- Twin 🛏🛏

Board Types

Full Board: 3 meals per day (breakfast, lunch and dinner). 21 meals per week

Half Board: 2 meals per day (breakfast and dinner). 14 meals per week

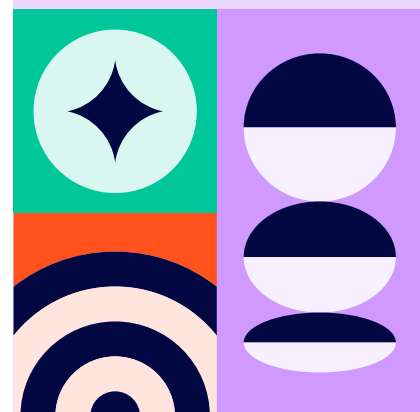
Self-catering: Room provided without meals

Residences are self-catering

Bathroom Types

Shared Bathroom: Bathroom shared with other residents and/or host family

Arrival and departure day:
Sunday to Saturday



Agent Enquiries

Our Agents are appointed experts in your country and can give you specialist advice on our courses, as well as any visa requirements. Contact us for an Agent in your area.

For agent sales enquiries please contact us at
 partners@bayswater.ac

Toronto

Course Fees

General English, Business and IELTS Preparation Prices and lessons are per week

| Course | Lessons | 1 to 11 | 12 to 23 | 24+ |
|-----------------|---------|---------|----------|-------|
| Standard | 20 | \$370 | \$350 | \$315 |
| Intensive | 25 | \$420 | \$405 | \$370 |
| Super Intensive | 30 | \$465 | \$450 | \$415 |

IELTS Preparation & Business English: Available in Standard 20 lessons
 Can be combined with General English as part of an Intensive or Super Intensive Course
 Minimum level for IELTS Preparation: B1 or students in level 4

| English Plus Add-ons | Lessons | Price | Notes |
|----------------------|---------|-------|---------------------------|
| One to One lessons | 5 | \$500 | Custom packages available |

| University Preparation | Lessons | 12 to 23 | 24+ |
|----------------------------|---------|----------|-------|
| University Pathway Program | 30 | \$450 | \$415 |

Cambridge Exam Preparation Prices are per course

| Course | Lessons | 8 weeks | 11 weeks | 12 weeks | Dates |
|-----------------|---------|---------|----------|----------|-------------|
| Intensive | 25 | \$3,360 | \$4,620 | \$4,860 | See website |
| Super Intensive | 30 | \$3,720 | \$5,115 | \$5,400 | |

First (FCE) - min level B2 (level 6)
 Advanced (CAE) - min level C1 (level 8)
 A combination of 20 Cambridge exam preparation lessons + 5/10 General English lessons.

Professional Upper Intermediate (B2) English level required

| Professional Certification | Duration | 20 lessons | Start Dates |
|----------------------------|----------|------------|-------------------------------|
| International Business | 4 weeks | \$2,250 | 2 Jan, 25 Mar, 17 Jun, 9 Sep |
| Digital Marketing | 4 weeks | \$2,250 | 29 Jan, 22 Apr, 15 Jul, 7 Oct |
| Project Management | 4 weeks | \$2,250 | 26 Feb, 21 May, 12 Aug, 4 Nov |

Premium Package*

| Professional and English | 8 weeks | 12 weeks | 24 weeks | 36 weeks | 48 weeks |
|--|---------|----------|----------|----------|----------|
| Any Canadian cities, any mix of professional and English courses** | \$3,695 | \$5,460 | \$10,455 | \$14,365 | \$18,645 |
| Extra week | \$460 | \$455 | \$435 | \$399 | \$385 |

*Includes registration fee and material fees
 **Courses to be studied one course at a time, not simultaneously
 **Professional Courses available in Vancouver & Toronto only



▲ 5 Park Home Ave 6th floor, North York, Toronto ON M2N 6L4

Quick Facts

All Courses Include

- Online placement test
- Welcome activity
- Organised social programme
- Student handbook
- End of course certificate
- WiFi
- Bayswater student portal
- Solo-study online content

Professional Courses

Minimum age: 18
 Class size: Max 16, Average 10

English Courses

Minimum age: 16
 Minimum stay: 1 week
 Courses start: Every Monday
 Class size: Max 15, Average 11

English Lessons

1 lesson: 45 min
 20 lessons: 15 hrs/week
 25 lessons: 18.75 hrs/week
 30 lessons: 22.5 hrs/week

Course Schedule is subject to change and availability

Centre Closure Dates

1 Jan 5 Aug
 19 Feb 2 Sep
 29 Mar 14 Oct
 20 May 23 to 27 Dec
 1 Jul 1 Jan 2025



Agent Enquiries

Our Agents are appointed experts in your country and can give you specialist advice on our courses, as well as any visa requirements. Contact us for an Agent in your area.

For agent sales enquiries please contact us at
 partners@bayswater.ac

Toronto

Accommodation, Transfers and Other Fees

Accommodation Prices are per week

| Homestay Age 16+ | | Full board | Half Board |
|---|---|---|------------|
| Single Room Shared Bathroom | | \$320 | \$290 |
| Twin* Room Shared Bathroom | | \$300 | \$275 |
| Summer Supplement 9 Jun - 31 Aug \$40 p/w | Minors Fee Students Under 18 years old \$35 p/w | Dietary Supplements \$30 - 80 | |

*Twin rooms are only available for two people travelling together
Students in a single room may be housed in the same homestay as other students
Students under 18 in a homestay must book, a return transfer and provide a custodianship consent form
Extra nights: billed on a pro rata basis

| Seneca Newnham Residence Age 18+ | Time | Summer only |
|----------------------------------|----------|-------------|
| Private room / shared bathroom | 35 min 🚗 | \$400 |

Summer dates coming soon

| Casa Toronto Residences Age 18+ | Time | Per week |
|---------------------------------|----------|----------|
| Shared room* / shared bathroom | 25 min 🚗 | \$325 |
| Private room / shared bathroom | 25 min 🚗 | \$425 |

*Shared rooms are only available for two people travelling together
Placement fee: \$250 | Prices only valid on bookings until 31 October 2023 | Bookings from Saturday to Saturday

| Casa Dream House Age 18+ | Time | Per week |
|--------------------------------------|----------|----------|
| Private room / shared bathroom | 35 min 🚗 | \$425 |
| Private room / semi-private bathroom | 35 min 🚗 | \$475 |
| Private room / private bathroom | 35 min 🚗 | \$525 |

Placement fee: \$250 | Prices only valid on bookings until 31 October 2023 | Bookings from Saturday to Saturday

| Casa Dream Apartments Age 18+ | Time | Per week |
|---|----------|----------|
| Dream Apartments private room / shared bathroom | 35 min 🚗 | \$425 |
| Dream Apartments private room / semi-private bathroom | 35 min 🚗 | \$475 |

Placement fee: \$250 | Prices only valid on bookings until 31 October 2023 | Bookings from Saturday to Saturday

Other Charges

| Prices per booking | |
|------------------------------------|-------|
| Registration Fee | \$185 |
| Accommodation Booking Fee | \$265 |
| Bank Charges | \$35 |
| Exam Fee - Cambridge & IELTS* | \$350 |
| Custodianship Document | \$150 |
| Professional Courses Materials Fee | \$40 |
| Prices per week | |
| Materials Fee** | \$10 |
| Insurance*** | \$25 |

* Optional Charges

** Applies to all language courses

*** Students must purchase Bayswater Insurance if living in Bayswater Student residences in Canada

All prices are subject to change

Transfers

| Airport | One Way |
|-----------------------|---------|
| Pearson International | \$150 |

Transfer prices can include up to 2 people per vehicle - same flight & address



▲ Harrington Residence
561 Sherbourne St Unit 2703

Quick Facts

Room Types

Single 🛏

Twin 🛏🛏

Board Types

Full Board: 3 meals per day (breakfast, lunch and dinner). 21 meals per week

Half Board: 2 meals per day (breakfast and dinner). 14 meals per week

Self-catering: Room provided without meals

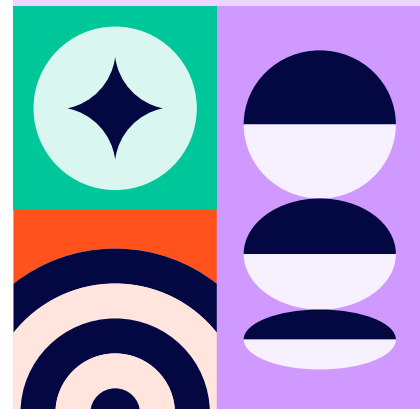
Residences are self-catering

Bathroom Types

En-suite: Bedroom with adjoining private bathroom

Shared Bathroom: Bathroom shared with other residents and/or host family

Arrival and departure day:
Sunday to Saturday



Calgary

Course Fees

General English, Business and IELTS Preparation Prices and lessons are per week

| Course | Lessons | 1 to 11 | 12 to 23 | 24+ |
|-----------------|---------|---------|----------|-------|
| Standard | 20 | \$370 | \$350 | \$315 |
| Intensive | 25 | \$420 | \$405 | \$370 |
| Super Intensive | 30 | \$465 | \$450 | \$415 |

IELTS Preparation & Business English: Available in Standard 20 lessons
 Can be combined with General English as part of an Intensive or Super Intensive Course
 Minimum level for IELTS Preparation: B1 or students in level 4

| English Plus Add-ons | Lessons | Price | Notes |
|----------------------|---------|-------|---------------------------|
| One to One lessons | 5 | \$500 | Custom packages available |

| University Preparation | Lessons | 12 to 23 | 24+ |
|----------------------------|---------|----------|-------|
| University Pathway Program | 30 | \$450 | \$415 |

Premium Package*

| Professional and English | 8 weeks | 12 weeks | 24 weeks | 36 weeks | 48 weeks |
|--|---------|----------|----------|----------|----------|
| Any Canadian cities, any mix of professional and English courses** | \$3,695 | \$5,460 | \$10,455 | \$14,365 | \$18,645 |
| Extra week | \$460 | \$455 | \$435 | \$399 | \$385 |

*Includes registration fee and material fees
 **Courses to be studied one course at a time, not simultaneously
 **Professional Courses available in Vancouver & Toronto only



▲ 840 6 Ave SW,
 Calgary, AB T2P 3E5

Quick Facts

All Courses Include

- Online placement test
- Welcome activity
- Organised social programme
- Student handbook
- End of course certificate
- WiFi
- Bayswater student portal
- Solo-study online content

Professional Courses

Minimum age: 18
 Class size: Max 16, Average 10

English Courses

Minimum age: 16
 Minimum stay: 1 week
 Courses start: Every Monday
 Class size: Max 15, Average 10

English Lessons

1 lesson: 45 min
 20 lessons: 15 hrs/week
 25 lessons: 18.75 hrs/week
 30 lessons: 22.5 hrs/week

Morning and Afternoon Course schedule is subject to change and availability.

Centre Closure Dates

| | |
|--------|--------------|
| 1 Jan | 5 Aug |
| 19 Feb | 2 Sep |
| 29 Mar | 14 Oct |
| 20 May | 11 Nov |
| 1 Jul | 23 to 27 Dec |
| | 1 Jan 2025 |



Calgary

Accommodation, Transfers and Other Fees

Accommodation Prices are per week

| Homestay Age 16+ | | Full-board | Half Board |
|---|---|--|------------|
| Single Room Shared Bathroom | | \$310 | \$280 |
| Summer Supplement 9 Jun - 31 Aug \$40 p/w | Minors Fee Students Under 18 years old \$50 p/w | Dietary Supplements \$50 p/w | |

Students in a single room may be housed in the same homestay as other students
 Students under 18 in a homestay must book a return transfer and provide a custodianship consent form
 Extra nights: billed on a pro rata basis

| The HUB Student Residence | Time | 2 - 4 weeks | 5 - 11 weeks | 12 - 23 weeks | 24+ weeks |
|---|--|-------------|-------------------------------------|---------------|-----------|
| Single Deluxe room, shared bathroom | 20 min | \$385 | \$330 | \$300 | \$275 |
| Refundable Security Deposit \$200 | Bayswater Insurance (Guardme) \$25/weekly* | | Laundry Card \$2 per load | | |

Private room in a shared apartment
 Free bedding, towels, kitchen supplies, utilities, Wifi, lounge, and gym
 *Required for all Hub Student Residents

Other Charges

| Prices per booking | |
|---------------------------|-------|
| Registration Fee | \$185 |
| Accommodation Booking Fee | \$210 |
| Bank Charges | \$35 |
| Exam Fee - IELTS* | \$350 |
| Custodianship Document | \$150 |
| Prices per week | |
| Materials Fee** | \$10 |
| Insurance*** | \$25 |

* Optional Charges
 ** Applies to all language courses
 *** Students must purchase Bayswater Insurance if living in Bayswater Student residences in Canada

Transfers

| Airport | One Way |
|-----------------------|---------|
| Calgary International | \$150 |

Transfer prices can include up to 2 people per vehicle - same flight & address



▲ The HUB Student Residence
 2416 16 Ave NW,
 Calgary AB T2M 5C7

Quick Facts

Room Types

Single

Board Types

Full Board: 3 meals per day (breakfast, lunch and dinner). 21 meals per week

Half Board: 2 meals per day (breakfast and dinner). 14 meals per week

Self-catering: Room provided without meals

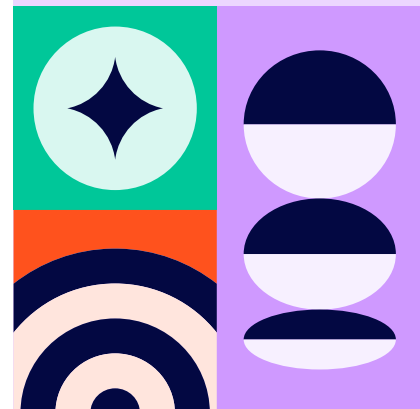
Residences are self-catering

Bathroom Types

Shared Bathroom: Bathroom shared with other residents and/or host family

Arrival and departure day: Sunday to Saturday

All prices are subject to change



Cape Town

Course Fees

General English and IELTS Preparation Prices and lessons are per week

| Course | Lessons | 1 to 11 | 12 to 23 | 24+ |
|-----------------|---------|---------|----------|------|
| Standard | 20 | €265 | €230 | €215 |
| Intensive | 25 | €320 | €275 | €245 |
| Super Intensive | 30 | €360 | €320 | €275 |

IELTS Preparation: Available in Intensive or Super Intensive.
A combination of 20 or 25 General English lessons + 5 dedicated IELTS lessons
Minimum level for IELTS Preparation: B1

| English Plus Add-ons | Lessons | Price | Notes |
|----------------------|---------|-------|---------------------------|
| One to One lessons | 5 | €350 | Custom packages available |

| Family Options | Lessons | 1+ | Extra adult/child | Course Dates |
|--------------------------|---------|------|-------------------|--------------|
| Young Learner (age 10+) | 20 | €265 | €250 | All -year |
| Parent & Child (age 10+) | 20 | €500 | €250 | |

Young Learners must be accommodated with a parent/guardian

Cambridge Exam Preparation Prices are per course

| Course | Lessons | 10 weeks | 12 weeks | Dates |
|-----------------|---------|----------|----------|-------------|
| Intensive | 25 | €3,200 | €3,300 | See website |
| Super Intensive | 30 | €3,600 | €3,840 | See website |

First (FCE) - min level B2 (level 6)
Advanced (CAE) - min level C1 (level 8)
A combination of 20 Cambridge exam preparation lessons + 5/10 General English lessons



▲ Leadership House Building
40 Shortmarket Street

Quick Facts

All Courses Include

- Online placement test
- Welcome activity
- Organised social programme
- Student handbook
- End of course certificate
- WiFi

English Courses

- Minimum age: 16
- Minimum stay: 1 week
- Courses start: Every Monday
- Class size: Max 15, Average 10

English Lessons

- 1 lesson: 45 min
- 20 lessons: 15 hrs/week
- 25 lessons: 18.75 hrs/week
- 30 lessons: 22.5 hrs/week

Family Options

- Parent & Child, Young Learner (Mon - Fri)
- Tuition only

Course Schedule is subject to change and availability

Centre Closure Dates

- 1 Jan 9 Aug
- 21, 29 Mar 24 Sep
- 1 Apr 16 Dec
- 1 May 23 to 31 Dec
- 17 Jun 1 Jan 2025



Cape Town

Accommodation, Transfers and Other Fees

Accommodation Prices are per week

| Homestay Age 16+ | Half Board |
|--------------------------------|------------|
| Single Room - Shared Bathroom | €195 |
| Single Room - Private Bathroom | €245 |
| Twin room - Shared Bathroom* | €145 |
| Twin Room - Private Bathroom* | €195 |

Dietary Supplements

€30 - 55 p/w

Students in a single room may be housed in the same homestay as other students

Students under 18 in a homestay must book at least Half Board, a return transfer and provide a guardian consent form

*Twin rooms are only available for two people travelling together

| Residences Age 18+ | Time | Self Cater |
|---|---------|------------|
| Neighbourgood East City, Single En-suite room with shared kitchen facilities* | 5 min 🚶 | €190 |
| Student at Home, Single bedroom apartment, shared bathroom* | 5 min 🚶 | €150 |

*Minimum stay 2 weeks

Other Charges

| Prices per booking | |
|---------------------------|-------------|
| Registration Fee | €75 |
| Accommodation Booking Fee | €55 |
| Bank Charges | €12 |
| Exam Fee - IELTS* | Coming soon |
| Exam Fee - Cambridge* | |
| Prices per week | |
| Materials Fee** | €6 |

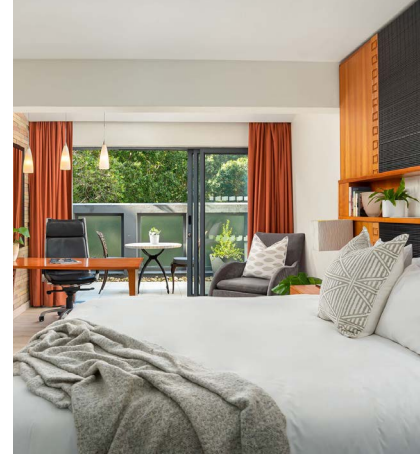
* Optional Charges

**Applies to all language courses

Transfers

| Airport | One Way |
|-------------------------|---------|
| Cape Town International | €55 |

Transfer prices can include up to 2 people per vehicle - same flight & address



▲ Neighbourgood, 60 Corporation Street, Cape Town

Quick Facts

Room Types

Single 🛏

Twin 🛏🛏

Single apartment

Shared apartment

Board Types

Half Board: Room, breakfast and one evening meals provided

Self-catering: Room provided without meals

Residences are self-catering

Bathroom Types

En-suite: Bedroom with adjoining private bathroom

Shared Bathroom: Bathroom shared with other residents and/or host family

Arrival and departure day:
Sunday to Saturday

All prices are subject to change



bayswater.ac/cape-town

E-mail us
partners@bayswater.ac

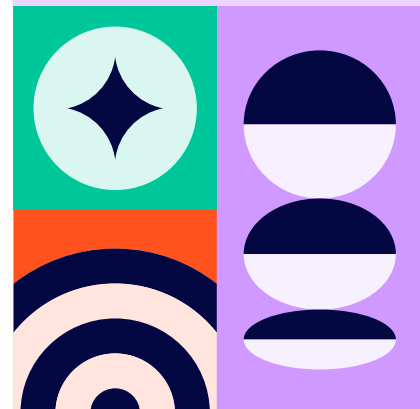
Call us
+27 71 888 4828

Visit us
40 Shortmarket Street, Leadership House Building

Agent Enquiries

Our Agents are appointed experts in your country and can give you specialist advice on our courses, as well as any visa requirements. Contact us for an Agent in your area.

For agent sales enquiries please contact us at
partners@bayswater.ac



Paris

Course Fees

General French Prices and lessons are per week

| Course | Lessons | 1 to 11 | 12 to 23 | 24+ |
|-----------|---------|---------|----------|------|
| Standard | 20 | €335 | €295 | €250 |
| Intensive | 25 | €380 | €340 | €295 |

| French Plus Add-ons | Lessons | Price | Notes |
|---------------------|---------|-------|---------------------------|
| One to One lessons | 5 | €350 | Custom packages available |

| Family Options | Lessons | 1+ | Extra adult/child | Course dates |
|--------------------------|---------|------|-------------------|--------------------------|
| Young Learner (age 10+) | 20 | €335 | €315 | 1 Jul, 15 Jul, 12 Aug |
| Parent & Child (age 10+) | 20 | €630 | €315 | |

Young Learners must be accommodated with a parent/guardian

DELFDALF Exam Preparation Prices are per week

| Course | Lessons | 2 - 4 weeks | Dates |
|-----------|---------|-------------|-------------|
| Intensive | 25 | €380 | See website |



▲ 13 Passage Dauphine,
75006 Paris

Quick Facts

All Courses Include

- Online placement test
- Welcome activity
- Organised social programme
- Student handbook
- End of course certificate
- WiFi

French Courses

- Minimum age: 16
- Minimum stay: 1 week
- Courses start: Every Monday
- Class size: Max 15, Average 10

French Lessons

- 1 lesson: 45 min
- 20 lessons: 15 hrs/week
- 25 lessons: 18.75 hrs/week

Family Options

- Parent & Child, Young Learner (Mon - Fri) Tuition only

Course schedule is subject to availability

Centre Closure Dates

- 1 Jan 15 Aug
- 1 Apr 1, 11 Nov
- 1, 8, 20 May 23 Dec to
- 14 Jul 3 Jan 2025

Beginner Course Dates

- 8 Jan 1, 15, 29 Jul
- 12 Feb 12 Aug
- 25 Mar 9 Sep
- 22 Apr 14 Oct
- 3 Jun 18 Nov



Paris

Accommodation, Transfers and Other Fees

Accommodation Prices are per week

| Homestay Age 16+ | Bed & Breakfast | Semi -Board | Half -board |
|------------------------|-----------------|-------------|-------------|
| Single shared bathroom | €295 | €365 | €390 |
| Twin shared bathroom | €260 | - | €350 |

| | | |
|---|--|--|
| Dietary Supplements Bed & Breakfast - €55 Half board - €75 | Private Bathroom Bed & Breakfast - €55 Half board - €75 | Extra ight Bed & Breakfast - €50 Half board - €65 |
|---|--|--|

Students in a single room may be housed in the same homestay as other students
Students under 18 in a homestay must book at least Half Board, a return transfer and provide a guardian consent form

| Residences Age 18+ | Time | 1 -4 weeks | 5+ |
|---|----------|------------|------|
| Noisy-Le-Grand, Studio, private bathroom | 45 min 🚗 | €350 | €325 |
| Bagnolet, Single room, private shower, private bathroom | 40 min 🚗 | €645 | €510 |
| Davout, Single room, private shower, private bathroom | 45 min 🚗 | €745 | €545 |
| St Mandé, Single room, private shower, private bathroom | 40 min 🚗 | €780 | €580 |

Please note subject to changes pre Olympics

Other Charges

| Prices per booking | |
|---------------------------|-------------|
| Registration Fee | €85 |
| Accommodation Booking Fee | €55 |
| Bank Charges | €12 |
| Exam Fee - DELF A2 | |
| Exam Fee - DELF B1 | Coming soon |
| Exam Fee - DELF B2 | |
| Exam Fee - DALF C1 | |

| Prices per week | |
|-----------------|----|
| Materials Fee** | €6 |

* Optional Charges
**Applies to all language courses

Transfers

| Airport/Station | One Way |
|---------------------------|---------|
| Orly Airport | €115 |
| Charles de Gaulle Airport | €115 |
| Any Paris Train Station | €90 |



▲ Noisy-Le-Grand Residence
2 Bd du Levant,
Noisy-le-Grand 93160

Quick Facts

Room Types

Single 🛏

Studio 🛏🛏

1 -bed apartment

Board Types

Bed & breakfast: Room and breakfast provided

Half Board: Room, breakfast and one evening meals provided

Self-catering: Room provided without meals

Semi-Board: Room, breakfast and 5 evening meals per week

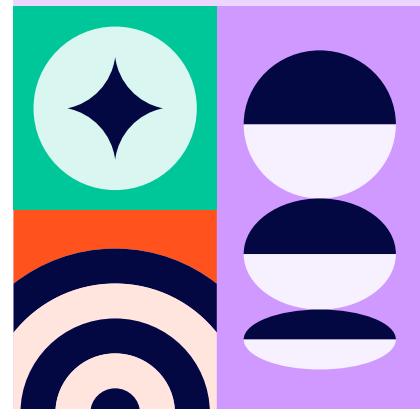
Residences are self-catering

Bathroom Types

En-suite: Bedroom with adjoining private bathroom

Shared Bathroom: Bathroom shared with other residents and/or host family

Arrival and departure day:
Sunday to Saturday



2024 Accommodation Prices are to be applied for 2024 start dates from 01 Sep 2023

All prices are subject to change



bayswater.ac/paris

E-mail us
partners@bayswater.ac

Call us
+33 1 40 46 72 00

Visit us
13 Passage Dauphine, 75006 Paris, France

Agent Enquiries

Our Agents are appointed experts in your country and can give you specialist advice on our courses, as well as any visa requirements. Contact us for an Agent in your area.

For agent sales enquiries please contact us at partners@bayswater.ac

Cyprus

Course Fees

General English and IELTS Preparation Prices and lessons are per week

| Course | Lessons | 1 to 11 | 12 to 23 | 24+ |
|--------------------|---------|---------|----------|------|
| Standard | 20 | €255 | €215 | €180 |
| Intensive | 25 | €310 | €245 | €210 |
| Combination course | 30 | €585 | €520 | €485 |

IELTS Preparation available in Standard 20 lessons. Can be combined with General English as part of an Intensive Course
Minimum level for IELTS preparation: B1

| One -to -One and Small Group | Lessons | Price | Extra lesson |
|------------------------------|---------|------------------|--------------|
| One to One lessons | 5 | €275 | €55 |
| Additional person | | €20 (per lesson) | |

Family and Young Learners

| Family Options | Lessons | 1+ | Extra adult/child |
|-----------------------------|---------|------|-------------------|
| Parent & Child (age 8+) | 20 | €490 | €245 |
| Young Learner (age 5 - 15) | Lessons | 1+ | Extra adult/child |
| Standard English (age 5-15) | 20 | €270 | €245 |

Summer Camp

| Course & ages | Accomm. & Catering | Lessons | Dates | Price |
|---------------------------------|-----------------------------|---------|-----------------|-------|
| UCLan Summer Camp (ages 12 -17) | Twin en -suite, full -board | 20 | 23 Jun - 11 Aug | €895 |
| Limassol Day Camp (ages 7 -15) | Lunch + snack, no accomm | 20 | 17 Jun - 09 Aug | €400 |



▲ 138 Vasileos Constantinou
Limassol 3080 Cyprus

Quick Facts

All Courses Include

Online placement test
Organised social programme
End of course certificate
WiFi

English Courses

Minimum age: 16
Minimum stay: 1 week
Courses start: Every Monday Class
Size: Max 15, Low season avg. 6,
High season av. 12

English Lessons

1 lesson: 45 min
20 lessons: 15 hrs/week
25 lessons: 18.75 hrs/week
30 lessons: 22.5 hrs/week

Family Options

Parent & Child, Young Learner
(Mon - Fri)
Tuition only

Day Camp (Mon - Fri)

Tuition, lunch and half day activities

Course schedule is subject to availability

Centre Closure Dates

1 to 5 Jan 15 Aug
18, 25 Mar 1, 28 Oct
1 Apr 23 Dec 2024 to
3, 6 May 6 Jan 2025
24 Jun



Cyprus

Accommodation, Transfers and Other Fees

Accommodation Prices are per week

| Hotel & Apartment <small>Age 18+ and accompanied children</small> | Winter rate 1-4 weeks 31 Dec - 1 Jun, 3 Nov - 29 Dec | Summer rate 1-4 weeks 2 Jun - 2 Nov | Winter rate 4+ weeks 31 Dec - 1 Jun, 3 Nov - 29 Dec | Summer rate 4+ weeks 2 Jun - 2 Nov |
|--|---|---|--|--|
| Navarria Blue Hotel Single En-Suite BB | €380 | €480 | €360 | €460 |
| Navarria Blue Hotel Twin En-Suite BB | €225 | €270 | €215 | €250 |
| Navarria Blue Hotel Triple En-Suite BB | €210 | €260 | €200 | €240 |
| Navarria Blue Hotel Single En-Suite HB | €470 | €565 | €430 | €535 |
| Navarria Blue Hotel Twin En-Suite HB | €320 | €365 | €300 | €335 |
| Navarria Blue Hotel Triple En-Suite HB | €310 | €350 | €290 | €320 |

Includes shuttle bus to and from school if booked directly through Bayswater Cyprus
Twin and Triple rooms available only for students travelling together

| Hotel & Apartment <small>Age 18+ and accompanied children</small> | Winter rate 1-4 weeks 31 Dec - 27 Apr, 3 Nov - 29 Dec | Summer rate 1-4 weeks 28 Apr - 2 Nov |
|--|--|--|
| Tasiana Star Hotel Single En-Suite SC | €440 | €525 |
| Tasiana Star Twin Hotel En-Suite SC | €265 | €300 |
| Navarria Blue Hotel Triple En-Suite BB | €200 | €230 |

Additional person € 120
Tasiana Star: Bed & Breakfast €55 p/w

| Homestay Age 16+ | B&B | Half Board |
|------------------------|------|------------|
| Single Shared Bathroom | €210 | €260 |

Students in a single room may be housed in the same homestay as other students

| Homestay Summer Supplement | Dietary Supplements |
|----------------------------|---------------------|
| 2 Jun - 31 Aug €35 p/w | €30 - 55 p/w |

Other Charges

| Prices per booking | |
|---------------------------|-----------------|
| Registration Fee | €75 |
| Accommodation Booking Fee | €55 |
| English in Cyprus | 1-2 people €80 |
| Shuttle bus per week | 3-4 people €100 |
| Credit card fee | 1.50% |
| Prices per week | |
| Materials Fee** | €6 |

* Optional Charges
**Applies to all language courses

All prices are subject to change



▲ Navarria Blue Hotel
Verginas 14, Limassol 4532,
Cyprus

Quick Facts

Room Types

Single 🛏

Twin 🛏🛏

Studio 🛏🛏

Board Types

Bed & breakfast (BB): Room and breakfast provided

Half Board: Room, breakfast and one evening meals provided

Self-catering (SC): Room provided without meals

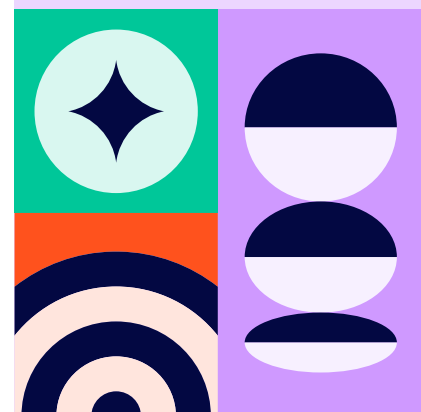
Residences are self-catering
Summer Residence self-catering

Bathroom Types

En-suite: Bedroom with adjoining private bathroom

Shared Bathroom: Bathroom shared with other residents and/or host family

Arrival and departure day:
Sunday to Sunday



Find out more

Agent enquiries

Our agents are appointed experts in your country and can give you specialist advice on our courses, as well as any visa requirements. Contact us for an agent in your area. For agent sales enquiries please contact us at partners@bayswater.ac

Email us

partners@bayswater.ac

Call us

+44 (0)20 7221 7259

Visit us

167 Queensway, London W2 4SB

 [bayswatercollege](https://www.facebook.com/bayswatercollege)

 [studybayswater](https://www.instagram.com/studybayswater)

 [bayswater.ac](https://www.bayswater.ac)

A social education enterprise
made in London

1808024-00001

